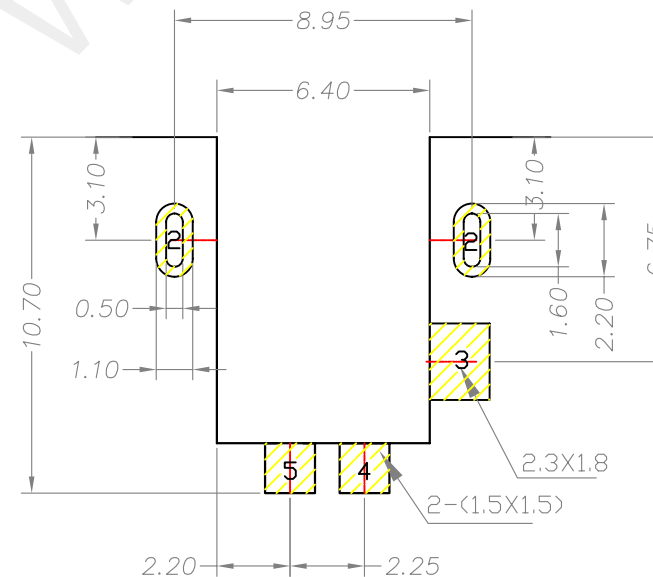
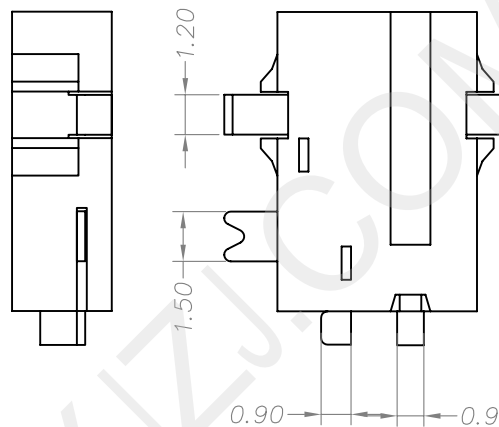
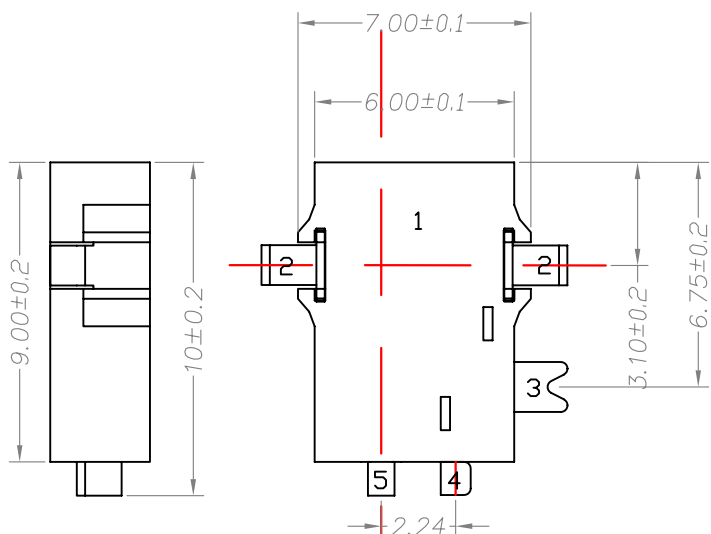
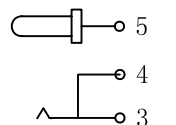


Ø2.5mm 2 POLE PLUG DETAIL DRAWING



P. C. B LAYOUT TOP VIEW



SCHEMATIC

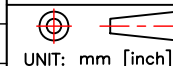
主要技术性能

| | |
|--------|------------------|
| 额定电负荷 | DC 30V 10.5A |
| 接触电阻 | ≤0.03 Ω |
| 绝缘电阻 | ≥100MΩ |
| 耐压 | AC500V(50Hz)/min |
| 插拔力 | 3-20N |
| 使用温度范围 | -30-70℃ |
| 使用寿命 | 5000次 |



深圳市华宇创精密电子有限公司

TOLERANCE:
X.X ±0.30
X.XX ±0.25
X.XXX ±0.15
X.' ±2' X.X' ±0.5'



UNIT: mm [inch]
SCALE:1:1 SIZE: A4

| | | |
|----------------------|----------------------|------------------------------|
| DRAWN BY : 陈一鸣 | DATE : 2014-02-23 | PART NAME: DC-056C |
| CHECKED BY : 马跃 | DATE : 2014-02-23 | PART NO. : HVC-DC056C-080 |
| APPROVED BY : 邱国夷 | DATE : 2014-02-23 | DRAW NO. : HVC-DC13101112 |
| | | SHEET NO. : 1 OF 1 |