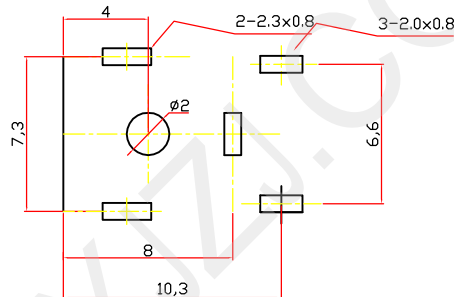
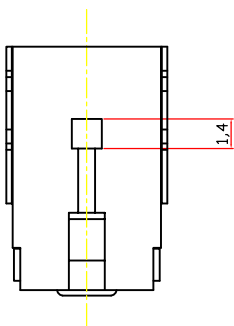


Model No.	DC00360-G	DC00360-H	DC00360-I	DC00360-J
	DC0036A-G	DC0036A-H	DC0036A-I	DC0036A-J
	DC0036B-G	DC0036B-H	DC0036B-I	DC0036B-J
PIN	Ø1.65	Ø2.0	Ø2.35	Ø2.5
DC MATE PLUG	Ø4.75	Ø5.5	Ø5.5	Ø5.5



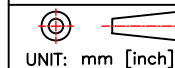
NOTES:

- ELECTRIC CHARACTERISTICS:
 - CONTACT CURRENT RATING: 4A.
 - CONTACT VOLTAGE RATING: 20V DC.
 - CONTACT RESISTANCE: 30mΩ MAX.;
 - DIELECTRIC WITHSTANDING VOLTAGE: 500V AC;
 - INSULATION RESISTANCE: 100MΩ MIN.AT DC 500V.
- MECHANICAL CHARACTERISTICS:
 - DURABILITY:3000 CYCLES.
 - INSERTION AND EXTRACTION FORCE:
 - INSERTION FORCE: 30N MAX.
 - EXTRACTION FORCE: 3N MIN.
- ENVIRONMENT CHARACTERISTICS:
 - OPERATING TEMPERATURE:-25℃~+85℃.
 - HUMIDITY:45~85% RH.



深圳市华宇创精密电子有限公司

TOLERANCE:
X.X ±0.30
X.XX ±0.25
X.XXX ±0.15
X.' ±2' X.X' ±0.5'



UNIT: mm [inch]

SCALE:1:1 SIZE: A4

DRAWN BY :
陈一鸣

DATE :
2014-02-23

PART NAME:
DC-036A

CHECKED BY:
马跃

DATE :
2014-02-23

PART NO. HYC-DC036A-XXX
MOLD NO.

APPROVED BY:
邱国夷

DATE :
2014-02-23

DRAW NO: HYC-DC17031710
SHEET NO. 1 OF 1